



# Tekla Structures 2016

## Licensing quick start

April 2016

©2016 Trimble Solutions Corporation



# Contents

<b>1</b>	<b>Tekla Structures licensing system .....</b>	<b>3</b>
<b>2</b>	<b>Taking Tekla Structures licenses into use .....</b>	<b>6</b>
2.1	Install Tekla Structures license server.....	6
2.2	Save your Tekla Structures license entitlement certificate.....	7
2.3	Activate Tekla Structures licenses.....	7
2.4	Connect Tekla Structures to the license server.....	8
<b>3</b>	<b>Deactivating Tekla Structures licenses.....</b>	<b>10</b>
3.1	Deactivate Tekla Structures licenses.....	11
<b>4</b>	<b>Borrowing licenses for using Tekla Structures offline .....</b>	<b>12</b>
4.1	Install and set up Tekla Structures License Borrow Tool for license borrowing.....	12
4.2	Borrow a Tekla Structures license.....	13
4.3	Return a borrowed Tekla Structures license.....	13

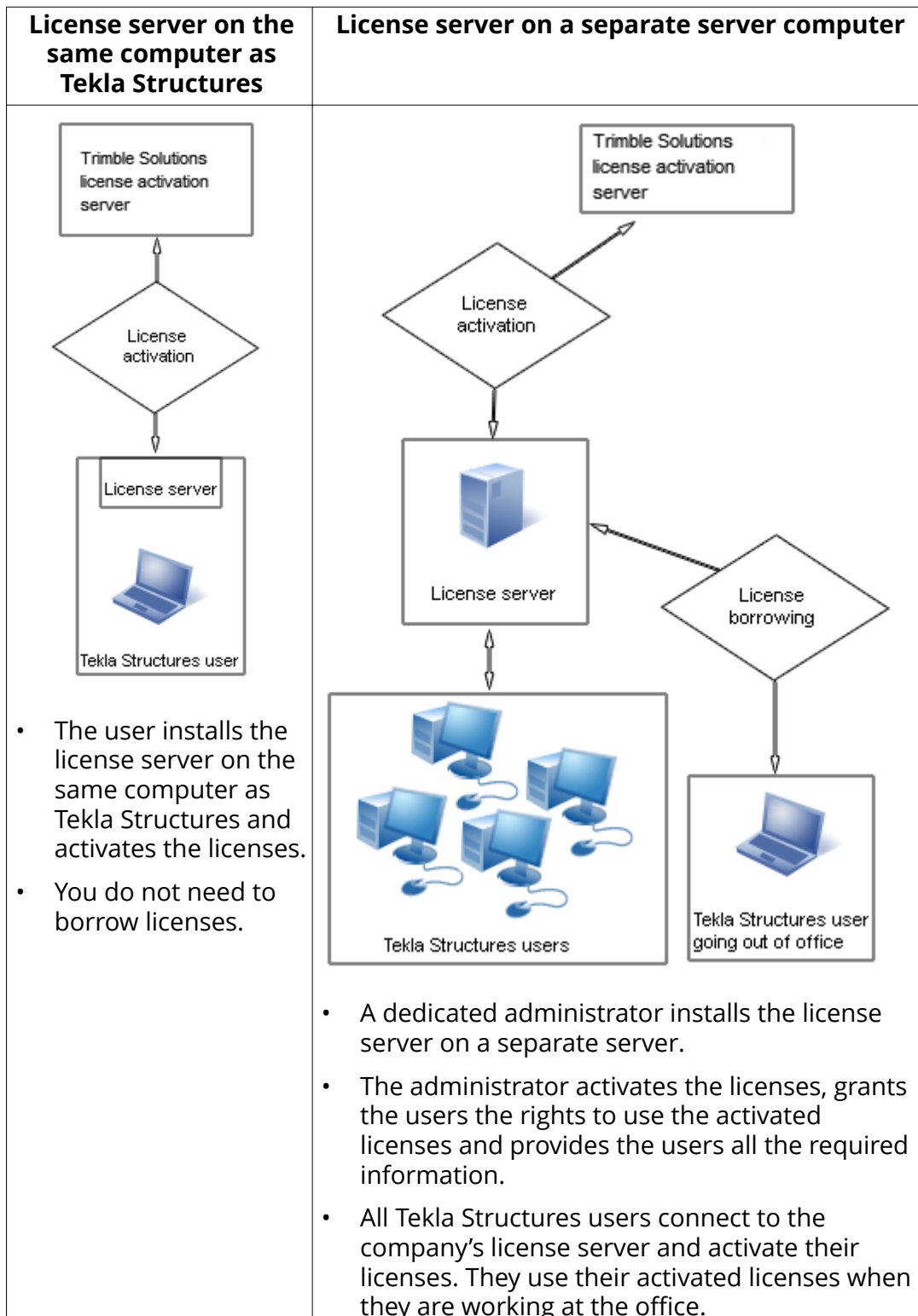
# 1 Tekla Structures licensing system

FlexNet is a licensing system provided by Flexera Software. The FlexNet licensing system is activation-based, and it supports redundancy via a server list. You need to activate your licenses to transfer the license rights from Trimble Solutions to your license server.

In Tekla Structures licensing system the following tasks need to be performed before you can start using Tekla Structures:

- Install and set up a license server either on a computer containing Tekla Structures or on a separate server computer: [Install Tekla Structures license server \(page 6\)](#).
- Save the license entitlement certificate: [Save your Tekla Structures license entitlement certificate \(page 7\)](#).
- Activate the Tekla Structures licenses: [Activate Tekla Structures licenses \(page 7\)](#).
- Connect each client computer with Tekla Structures to the license server: [Connect Tekla Structures to the license server \(page 8\)](#).
- Borrow licenses for using Tekla Structures offline if you do not have the license server installed on your computer: [Borrowing licenses for using Tekla Structures offline \(page 12\)](#).

## Example



<b>License server on the same computer as Tekla Structures</b>	<b>License server on a separate server computer</b>
	<ul style="list-style-type: none"> <li>• Some users borrow licenses from the license server when they need to use Tekla Structures offline.</li> </ul>

### **Tekla Campus users**

The FlexNet licensing system is not used with Tekla Structures Learning Edition, and FlexNet licensing instructions do not apply. For more information about Tekla Structures Learning Edition, see <https://campus.tekla.com/>

# 2 Taking Tekla Structures licenses into use

To take your Tekla Structures license server into use, follow the workflow below:

1. [Install Tekla Structures license server \(page 6\)](#)
2. [Save your Tekla Structures license entitlement certificate \(page 7\)](#)
3. [Activate Tekla Structures licenses \(page 7\)](#)
4. [Connect Tekla Structures to the license server \(page 8\)](#)

## 2.1 Install Tekla Structures license server

Install the Tekla Structures license server. This is phase 1 in the workflow [Taking Tekla Structures licenses into use \(page 6\)](#).

If you are using other FlexNet licensing services, you need to stop them before you install the Tekla Structures license server. When you have completed installing the Tekla Structures license server, you can restart the other licensing services.

To install the license server:

1. Go to [Tekla Downloads](#) and download the latest Tekla Structures license server installation.
2. For standard setup, select the options **Automatic** and complete the installation.

Tekla Structures license server is installed.

In automatic license server installation, the license server host name is automatically set to `27007@your_host_name`, where 27007 is the port and `your_host_name` is your computer name.

Automatic installation is recommended. Use the **Manual** installation only if you are an advanced user of FlexNet or Flexlm licensing, and you need to change something in the default installation, for example, the TCP/IP port. For more information, see [Installing Tekla Structures license service - manual installation](#)

## 2.2 Save your Tekla Structures license entitlement certificate

Save your license entitlement certificate. This is phase 2 in the workflow [Taking Tekla Structures licenses into use \(page 6\)](#).

As a preliminary action for transferring license rights from Trimble Solutions license activation server to your license server, you need to save the entitlement certificate that you received as an e-mail attachment.

To save the license entitlement certificate:

1. In your e-mail application, open the e-mail containing the entitlement certificate.
2. Download the entitlement certificate file `EntitlementCertificate.html` to the `..\TeklaStructures\License\Server` folder.

The entitlement certificate states the configurations, quantities and activation IDs of your Tekla Structures licenses. The entitlement certificates are not computer-specific. This means that you can activate licenses from several entitlements on one license server and you can activate licenses from one entitlement (containing several licenses) on several license servers.

## 2.3 Activate Tekla Structures licenses

Activate your Tekla Structures licenses. This is phase 3 in the workflow [Taking Tekla Structures licenses into use \(page 6\)](#).

You need to activate the licenses on the license server to use Tekla Structures. When you activate the licenses and notify the server, the license rights are transferred from the activation server at Trimble Solutions to the license server. Use **Tekla Structures License Administration Tool** for activating licenses.

---

**NOTE** Do not use the automatic license server notification functionality if you are using some other FlexNet license and license server administration tool, such as FlexNet Manager. To use manual notification, see [Activating Tekla Structures licensing using manual server notification](#).

---

To activate your licenses and notify the license server about license changes:

1. Go to **Tekla Structures Licensing** --> **Tekla Structures License Administration Tool** through the **Start** menu or **Start screen**, depending on your Windows operating system.
2. Enable the automatic license server notification functionality by clicking the **Notify Server** button.
3. You saved your entitlement certificate in the `..\TeklaStructures\License\Server` folder, and the licenses should now be listed in the **Entitled Licenses** area. If they are not listed, click **Open**, select `EntitlementCertificate.html`, and click **Open** again.
4. Select the number of licenses to activate.
5. Click the **Activate** button.

Your license server contacts the activation server at Trimble Solutions. The activated licenses are displayed under the **Activated Licenses** area.

Next, you need to connect Tekla Structures to the license server when you start Tekla Structures for the first time.

## 2.4 Connect Tekla Structures to the license server

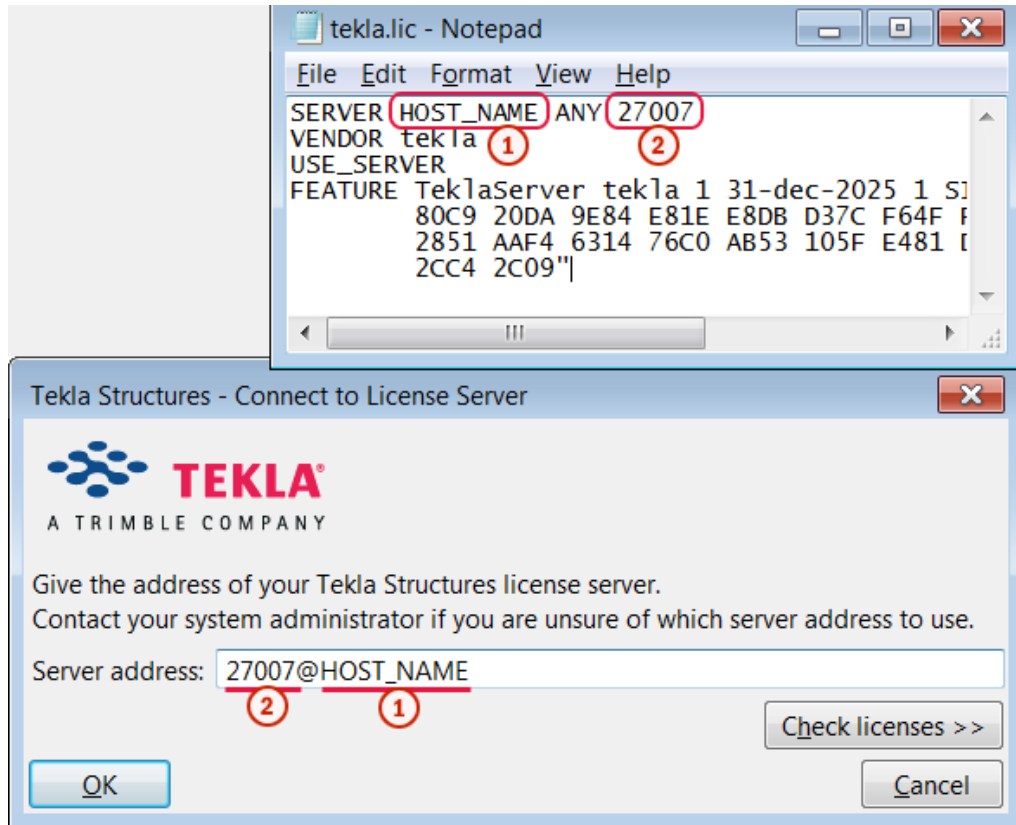
Connect Tekla Structures to the license server. This is phase 4 in the workflow [Taking Tekla Structures licenses into use \(page 6\)](#).

To connect Tekla Structures to the license server when you start Tekla Structures for the first time:

1. Start Tekla Structures.
2. To connect Tekla Structures to the license server, enter the `port@hostname` information in the **Connect to License Server** dialog box, for example `27007@HOST_NAME`.

The host name and port must correspond with the host name and port found in the `tekla.lic` file on the server computer located at `..\TeklaStructures\License\Server`. The license server administrator informs users about the license server name and port number.





1. host

2. port

If there is more than one license server available with activated licenses, you can define a primary and a secondary server in the **Connect to License Server** dialog box by separating the servers with a semicolon as follows: 27007@HOST\_NAME\_1;27007@HOST\_NAME\_2

3. Click **OK** to start Tekla Structures.

# 3 Deactivating Tekla Structures licenses

---

**NOTE** Before you deactivate licenses, ensure that the licenses are not in use or borrowed. The borrowed licenses must be returned before they can be deactivated.

---

You need to deactivate licenses in the following cases:

- Before activating the next temporary license or a permanent license in the license chain.
- When renewing the annual maintenance, for example, when you switch from Tekla Structures 20 licenses to Tekla Structures 21 licenses, you need to deactivate the licenses from the previous year to be able to activate the licenses for the following year.
- If you have activated a wrong configuration or too many configurations.
- Before re-hosting the license server from one computer to another.
- Before changing hardware, the IP address or the MAC address on the license server.
- Before reinstalling or upgrading Windows on your server computer.
- Before formatting your server computer.

Things to remember when you deactivate licenses:

- You need to deactivate all the licenses that are displayed on the same row in the **Activated Licenses** area in the **Tekla Structures License Administration Tool**.
- Internet access is required in license deactivation.
- After deactivation, you can activate the licenses again on the same or on another server.

## See also

[Deactivate Tekla Structures licenses \(page 11\)](#)

## 3.1 Deactivate Tekla Structures licenses

To deactivate your Tekla Structures licenses:

1. Close Tekla Structures.
2. Go to **Tekla Structures Licensing** --> **Tekla Structures License Administration Tool** through the **Start** menu or **Start screen**, depending on your Windows operating system.
3. Go to the **Statistics** tab, and ensure that nobody is using the licenses you are going to deactivate.
4. Go to the **Licenses** tab and select the licenses that you want to deactivate.

You need to deactivate all the licenses that are displayed on the same row in the **Activated Licenses** area.

5. Select the licenses you want to deactivate.
6. Click **Deactivate**.

The license server contacts the activation server at Trimble Solutions through an Internet connection. After a successful deactivation you will see the license successfully deactivated message, and the **Tekla Structures License Administration Tool** dialog box is updated.

After deactivating the licenses you can activate them on the same or on another server.

### See also

[Deactivating Tekla Structures licenses \(page 10\)](#)

# 4 Borrowing licenses for using Tekla Structures offline

You can borrow an activated license from the license server when you work offline and no license server is installed on your computer. The borrowed license is transferred from the license server to your computer, so it is not available for other users during the borrowing period.

To borrow licenses, follow the workflow below:

1. [Install and set up Tekla Structures License Borrow Tool for license borrowing \(page 12\)](#)
2. [Borrow a Tekla Structures license \(page 13\)](#)
3. [Return a borrowed Tekla Structures license \(page 13\)](#)

## 4.1 Install and set up Tekla Structures License Borrow Tool for license borrowing

Set up **Tekla Structures License Borrow Tool**: install **Tekla Structures License Borrow Tool**, connect Tekla Structures to the license server, and open the product ID file containing all Tekla Structures configurations and their product IDs. You may use the default product ID file (`standard.tpi`) or ask your administrator to send you a new and customized product ID file that contains only the configurations that you are allowed to use. This is phase 1 of the workflow [Borrowing licenses for using Tekla Structures offline \(page 12\)](#).

To install and set up **Tekla Structures License Borrow Tool**:

1. Download and install the latest **Tekla Structures License Borrow Tool** from [Tekla Downloads](#).

The installer is also available on the Tekla Structures installation DVD.

2. Go to **Tekla Structures License Borrow** --> **Tekla Structures License Borrow Tool** through the **Start** menu or **Start screen**, depending on your Windows operating system.
3. In the **Borrow from License Server** dialog box, enter the port number with the host name (computer name) in format `port@host` in the **Server** text box, for example, `27007@HOST_NAME`.

You need to use exactly the same port and host name as in the **Connect to License Server** dialog box when starting Tekla Structures.

4. Click **OK**.
5. Click **Open** in **Tekla Structures License Borrow Tool**.
6. Select the product ID file and click **Open**.

The list of licenses is updated in **Tekla Structures License Borrow Tool**. Now you can borrow licenses.

## 4.2 Borrow a Tekla Structures license

Borrow a license from the Tekla Structures license server. This is phase 2 of the workflow [Borrowing licenses for using Tekla Structures offline \(page 12\)](#).

To borrow a license from the license server:

1. In **Tekla Structures License Borrow Tool**, in the **Products** area, click the **Borrow Until** box and select the expiration date for the borrowing period from the calendar.

The maximum borrowing period is one month.

2. Click **Borrow**.

The borrowing progress is displayed. After successful borrowing the **Borrowed Licenses** area shows the borrowed license.

3. Disconnect your computer from the license server and start Tekla Structures with the borrowed license to ensure that the borrowing succeeded.

## 4.3 Return a borrowed Tekla Structures license

Return the borrowed license when you do not need to use it anymore. This is phase 3 of the workflow [Borrowing licenses for using Tekla Structures offline \(page 12\)](#).

A borrowed license is automatically available on the license server one day after the expiration date. However, you need to return the expired license to

the license server to update the **Borrowed Licenses** area in **Tekla Structures License Borrow Tool**. You can return a borrowed license any time.

To return a borrowed license:

1. Connect your computer to the network where you can connect to the license server.
2. Close Tekla Structures.
3. Go to **Tekla Structures License Borrow --> Tekla Structures License Borrow Tool** through the **Start** menu or **Start screen**, depending on your Windows operating system.
4. Select the **Return** check box in the **Borrowed Licenses** area to select the license to return.
5. Click **Return**.

After successful returning, the **Borrowed Licenses** area is updated.

# 5 Disclaimer

© 2016 Trimble Solutions Corporation and its licensors. All rights reserved.

This Software Manual has been developed for use with the referenced Software. Use of the Software, and use of this Software Manual are governed by a License Agreement. Among other provisions, the License Agreement sets certain warranties for the Software and this Manual, disclaims other warranties, limits recoverable damages, defines permitted uses of the Software, and determines whether you are an authorized user of the Software. All information set forth in this manual is provided with the warranty set forth in the License Agreement. Please refer to the License Agreement for important obligations and applicable limitations and restrictions on your rights. Trimble does not guarantee that the text is free of technical inaccuracies or typographical errors. Trimble reserves the right to make changes and additions to this manual due to changes in the software or otherwise.

In addition, this Software Manual is protected by copyright law and by international treaties. Unauthorized reproduction, display, modification, or distribution of this Manual, or any portion of it, may result in severe civil and criminal penalties, and will be prosecuted to the full extent permitted by law.

Tekla, Tekla Structures, Tekla BIMsight, BIMsight, Tekla Civil, Tedds, Solve, Fastrak and Orion are either registered trademarks or trademarks of Trimble Solutions Corporation in the European Union, the United States, and/or other countries. More about Trimble Solutions trademarks: <http://www.tekla.com/tekla-trademarks>. Trimble is a registered trademark or trademark of Trimble Navigation Limited in the European Union, in the United States and/or other countries. More about Trimble trademarks: <http://www.trimble.com/trademarks.aspx>. Other product and company names mentioned in this Manual are or may be trademarks of their respective owners. By referring to a third-party product or brand, Trimble does not intend to suggest an affiliation with or endorsement by such third party and disclaims any such affiliation or endorsement, except where otherwise expressly stated.

Portions of this software:

D-Cubed 2D DCM © 2010 Siemens Industry Software Limited. All rights reserved.

EPM toolkit © 1995-2004 EPM Technology a.s., Oslo, Norway. All rights reserved.

Open CASCADE Technology © 2001-2014 Open CASCADE SA. All rights reserved.

FLY SDK - CAD SDK © 2012 VisualIntegrity™. All rights reserved.

Teigha © 2003-2014 Open Design Alliance. All rights reserved.

PolyBoolean C++ Library © 2001-2012 Complex A5 Co. Ltd. All rights reserved.

FlexNet Copyright © 2014 Flexera Software LLC. All Rights Reserved.

This product contains proprietary and confidential technology, information and creative works owned by Flexera Software LLC and its licensors, if any. Any use, copying, publication, distribution, display, modification, or transmission of such technology in whole or in part in any form or by any means without the prior express written permission of Flexera Software LLC is strictly prohibited. Except where expressly provided by Flexera Software LLC in writing, possession of this technology shall not be construed to confer any license or rights under any Flexera Software LLC intellectual property rights, whether by estoppel, implication, or otherwise.

To see the third party licenses, go to Tekla Structures, click **File menu --> Help --> About Tekla Structures** and then click the **3rd party licenses** option.

The elements of the software described in this Manual are protected by several patents and possibly pending patent applications in the United States and/or other countries. For more information go to page <http://www.tekla.com/tekla-patents>.



# Index

<b>A</b>	
adding to Template Editor.....	21
assemblies	
in reports.....	27
in templates.....	6
attributes	
in bending schedules.....	11
in templates.....	18
<b>B</b>	
bending schedule.....	10
bending schedules	
attributes and values.....	11
<b>C</b>	
calculations.....	35
comments	
in templates.....	22
content types.....	15
creating	
reports.....	26,27
templates.....	4,5
<b>D</b>	
date	
format.....	36
drawings	
in reports.....	27
<b>F</b>	
fonts	
reports.....	30
free attributes.....	10,11
<b>G</b>	
graphical templates.....	5,10
<b>H</b>	
hierarchy	
in templates.....	23
HTML templates.....	5
html.rpt.....	5
<b>I</b>	
images	
in templates.....	12
imperial units.....	35
<b>L</b>	
log files	
viewing.....	34
<b>P</b>	
pictures	
in templates.....	12
printing	
reports.....	30
pull-out pictures.....	10
pullout pictures.....	10
<b>R</b>	
reports.....	25
adding tabs.....	28
creating.....	26
drafts.....	26
fonts.....	30

of drawings.....	27
of nested assemblies.....	27
printing.....	30
settings.....	31
tips.....	33
titles.....	31
viewing.....	28,34

## S

saving	
templates.....	4
selecting	
objects included in reports.....	33
settings	
reports.....	31
sheet numbers.....	36
shortcuts	
in viewing logs and reports.....	34

## T

tabs	
in reports.....	28
template attributes.....	18
Template Editor.....	3,25
templates.....	3
adding images.....	12
aligning objects.....	6
attributes.....	18
comments.....	22
content types.....	15
creating.....	4
free attributes.....	10
graphical templates.....	5,10,12
headers and footers.....	5,6
hierarchy.....	23
in HTML format.....	5
moving objects.....	6
of bending schedules.....	10,11
of nested assemblies.....	6
rows.....	15
saving.....	4
sorting order.....	6
textual templates.....	6
tips.....	33
user-defined attributes.....	19,21,22,23

text type attributes	
in calculations.....	35
textual templates.....	6
tips	
templates and reports.....	33
useful shortcuts in viewing logs and	
reports.....	34
titles in reports.....	31

## U

user-defined attributes	
in templates.....	19,21,22,23

## V

value fields	
imperial units.....	35
viewing	
reports.....	28



# Index

<b>A</b>	
activating licenses.....	7
<b>B</b>	
borrowing licenses.....	13
<b>C</b>	
connecting Tekla Structures to license server.....	8
<b>D</b>	
deactivating licenses.....	10,11
<b>E</b>	
entitlement certificate saving.....	7
<b>F</b>	
FlexNet.....	3
<b>I</b>	
installing license server.....	6
<b>L</b>	
license server.....	3
connecting Tekla Structures.....	8
installing.....	6
notifying about license activation.....	7
taking into use.....	6
licenses	
activating.....	7
borrowing.....	13
borrowing workflow.....	12
deactivating.....	10,11
licensing system.....	3
returning borrowed.....	13
saving entitlement certificate.....	7
setting up license borrowing.....	12
when to borrow.....	12
licensing in Tekla Structures.....	3
licensing	
deactivating licenses.....	11
<b>N</b>	
notifying license server.....	7
<b>R</b>	
returning borrowed licenses.....	13
<b>S</b>	
starting Tekla Structures License Borrow Tool...	12

